

Multicultural **LEADERSHIP** Program

Celebrating 5 Years
Leadership Untapped
Our Graduates Are Our Legacy

To develop diverse leaders

July 2013

In This Issue

Welcome Class of 2014

MCLP Endowment Fund

Our Graduates Are Our
Legacy

Creating Partnerships to
Change a Community

Who Are We

MCLP is an intense professional leadership development program that provides a framework for diverse individuals with an interest and potential to serve as leaders in our community.

Our goal is to prepare skilled, informed individuals for leadership positions in public, private, educational, political and non-profit sectors.

Class of 2014



MCLP 5 Years Strong and Growing

by Elayne Goldman & Kelli Saizon, Class of 2013

Multicultural Leadership Program (MCLP) is maturing and cultivating even more leaders. The public was invited to welcome and congratulate participants at a public reception for the class held 4pm - 5pm, July 25, 2013 at Heartland Community College's Astroth Community Education Center Atrium.

Attending orientation night ignited reflection on previous orientations. Everyone radiated enthusiasm for what is to come for another year of MCLP and for the current class. According to calculations relayed by MCLP's founder, Phani Aytam, the program receives more than 8,000 volunteer hours each year to support

the MCLP class. The circle of support was clearly visible as participants were surrounded by family, managers, mentors, friends, MCLP Staff and volunteers, and, of course, their new classmates. Class members could see that they will not be alone in their respective journeys.

Participants for this year's class are: Ajay Kalavala, Alyssa Bisanz, Bobbi Hynes, Cheryl Hussain, Dakesa Pina, Dipti Hattangady, Emmanuel Calmes, Lola Thomas-Albright, Ivan Hall, Jeffrey Hreha, Jerin Thomas, Joy Born, Julie Navickas, Kiranmayi Konam, Kristin Manzi, Lauren Eckhardt, Linda Bollivar, Phyllis Glover-Webster, Sateesh Nallamothe, Seena Bhende, Sheena Bedi, Stephanie Duquette, Tammy Vancil, Tara Brown, Tejas Jani, and Tim Beccue.

To see the faces of the Class of 2014 please visit <http://public.bn-mclp.org/class-of-2014/>.

Facilitators for the Class of 2014 are Michael Wolf and Emily Vigneri, both alumni of the Class of 2013. History has already been made in MCLP's 5th year. With 26 participants, the Class of 2014 is the largest class ever. Throughout the year additional information will be publicized about the celebrations to commemorate MCLP's 5-year milestone.

MCLP Endowment Fund

Perpetual Sustainability

by Sonya Mau



Remember when you began thinking about your future? The Multicultural Leadership Program (MCLP) is thinking about its future and needs your help to sustain the program.

For the past four years, community support meant MCLP successfully graduated almost 100 servant leaders. It is time to think about a sustainable future. To keep MCLP going for years to come, an MCLP endowment was established for long-term financial stability. Our endowment fund was announced at the MCLP graduation celebration last April. We gratefully report that over \$20,000 in gifts and pledges were received within a month of that announcement.

What is the MCLP Endowment Fund?

The MCLP Endowment Fund is a general endowment fund supported by charitable gifts.

The fund is invested and managed to provide a sustainable income stream to MCLP, maintaining the gift's purchasing power in perpetuity.

Why was this endowment established?

The fund was established to continue the good work of MCLP: developing diverse leaders to serve and meet community needs.

How does it work?

MCLP has partnered with the Illinois Prairie Community Foundation (IPCF), an organization with 15 years experience managing endowment portfolios.

\$50,000 in donations over the past four years launched the endowment; MCLP hopes to match that with another \$50,000 of gifts before March, 2014.

The total amount will be announced at MCLP's 5th graduation on April 5, 2014.

All MCLP endowment gifts are welcomed

Individual donors contributing \$1,000 or more are recognized as Founding Members.

Corporate donors contributing \$5,000 or more are recognized as Founding Members

All Founding Members will be listed permanently on the MCLP website and in future graduation programs.

All amounts are welcomed and tax deductible.

Endowment gifts can be mailed to:

Illinois Prairie Community Foundation

Attn. MCLP Endowment Fund

2401 E. Washington, Suite 300B

Bloomington, IL 61704

Make checks payable to IPCF-MCLP.

Please cite "Multicultural Leadership Program Endowment Fund" on the check.

You may also endow online at www.bn-mclp.org.

Your support will ensure the development of many more diverse leaders for the vitality of our community.

Our Graduates Are Our Legacy

Looking Back

by Kelli Saizon, Class of 2013

In the words of three-time Indianapolis 500 winner Bobby Unser, "Success is where preparation and opportunity meet." Every MCLP graduate has made the conscious decision to take advantage of the opportunities offered by the program – to better prepare themselves as diverse leaders in the community.



They recognized the benefits of immersing themselves into an intense 8-month program. Through MCLP they developed skills in self and community awareness, leadership, community service, and servant leadership.

Class participants may have wondered how they would complete such an in-depth program, yet the extra effort paid off. MCLP was a one-of-a-kind experience for Class of 2013 Alum, Missy Thomas. "Looking back, I have to say that the networking opportunities within the community, education and awareness regarding leaders here in McLean County, interaction and inspirational stories of my classmates were all worth the journey," she said.

Legacy is a gift left to another. Each class contributes to MCLP's mission: developing diverse leaders. MCLP's graduates "pay it forward" with their selfless spirits – aiding the community, their employers, and their friends and family. The talents that MCLP helped hone continue to reap both personal and community rewards.

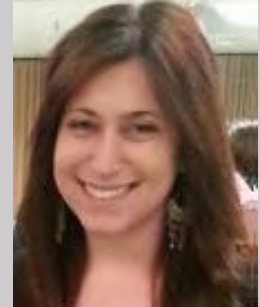
Among the best advice MCLP participants say they have received is to take the time to enjoy and make the most of their personal journey. Christa Staley, another Class of 2013 Alum, summed it up perfectly; "It was really like I blinked and we were at graduation. I learned much, laughed often, and life lessons were bestowed on me plentifully, in ways I'd have never been able to even imagine in my wildest dreams. The people, the memories, the knowledge, and the experiences are far more, better, and really amazing in ways no one will ever know until they, too, are alum of MCLP!"

Creating Partnerships to Change a Community

Marcfirst and MCLP

by Elayne Goldman

Located in the heart of Normal, IL, Marcfirst has become a bridge to a community where those with developmental disabilities can pursue their dreams and desires in a nurturing environment built on dignity and respect.



With decreased governmental funding, Marcfirst developed a janitorial service to employ its clients and gain income to support those clients. One of the Multicultural Leadership Program (MCLP) Class of 2011 projects was to develop a marketing plan for this janitorial service, so that local businesses and organizations would learn of its availability. Thanks to this effort, Marcfirst revised their outreach and helped more firmly establish their service.

“The project developed a plan that focused on the product that the janitorial program provided rather than focusing on disabilities,” said Senior Vice President of Marcfirst, Mary Riddle. “The product provided by the janitorial program is needed in the Bloomington/Normal area.”

When asked why this partnership was so important to Marcfirst, Riddle said, “Marcfirst has to depend on the state for funding. In 2009, there were many cut backs from the state to the agency. Marcfirst needed to do something to not have to rely totally on government funding, so it started a janitorial program. This program was started to bring in revenue to help support programs that were struggling financially.”

While this partnership was extremely beneficial to Marcfirst and the Bloomington/Normal community, the MCLP Class of 2011 saw their achievements on a more personal level. “For MCLP, it was an opportunity to add value to a community because they believed in,” said Sonya Mau, Executive Director of MCLP. “They were able to measure the difference they made.”

As a participant in the MCLP Class of 2013 as well, Riddle is able to see the importance of the partnership from both sides. “MCLP has a wealth of knowledge and skills in the students that participate. I feel that MCLP students also take their role in their projects seriously and work very hard to give the project their best efforts,” said Riddle. “I also believe that Marcfirst helped this team understand more about people with disabilities and the funding mechanisms that a nonprofit like ours depends on. Marcfirst works

so well because we look at what can be done, not what can't be done. We look at the needs of people with disabilities and focus on how we can support them.”

One of the goals of MCLP is to create strong leaders in the community, and Riddle is a proud product of the program. “I met people I never would have met,” she said. “I became more aware of whom I was as a leader at Marcfirst and realized I was where I needed to be in my life and career, working and advocating for people with disabilities. After graduating, I knew I needed to continue on with MCLP. I am proud to say I am a Board Member and am on the Community Involvement team. I have made lasting friends with my MCLP partnership.”

Former Marcfirst CEO Rick Glass stated that overall it was a great partnership. “It was an opportunity to re-introduce Marcfirst and build more relationships, especially in the community,” he said. It was a great way to get project work done.”

Multicultural Leadership Program (MCLP)

www.bn-mclp.org

contactus@bn-mclp.org

309-438-3417

Office Location

8 Vrooman Center
Illinois State University
213 W. Mulberry St.
Normal, IL 61761

Mailing Address

c/o University College
Campus Box 4070
Illinois State University
Normal, IL 61790-4070